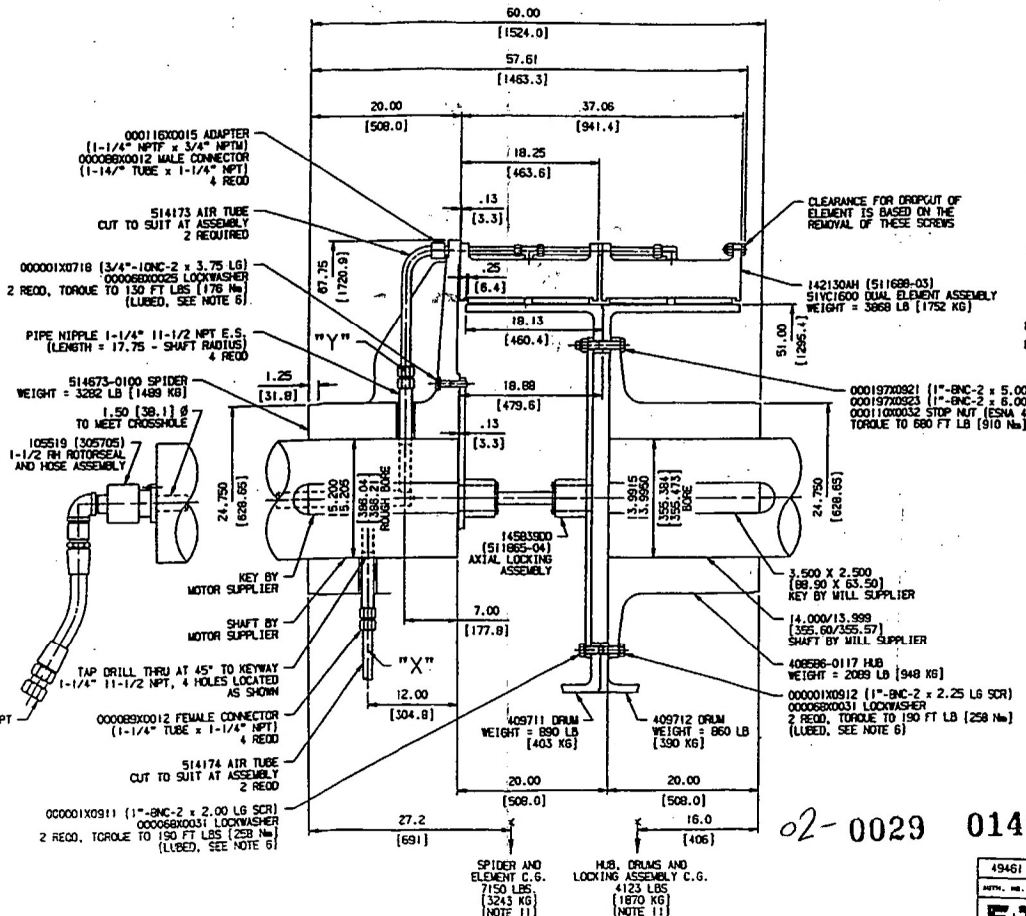


END VIEW OF SHAFT
SHOWING DIMENSIONS FOR
MOUNTING ROTORSEAL
SCALE = NONE



- CLUTCH RATED TORQUE = 3,220,000 LB.INS. AT 75 PSI (384,000 Nm AT 5.2 BAR). (EXACT TORQUE RATING IS DEPENDENT UPON APPLIED AIR PRESSURE AND OPERATING SPEED).
- EATON WARRANTIES ARE VOID IF THESE SPECIFICATIONS ARE EXCEEDED. EATON ACCEPTS NO RESPONSIBILITY AND EXTENDS NO WARRANTY UNLESS IT HAS APPROVED ANY VARIATION IN ADVANCE.
- ALL ROTATING EQUIPMENT MUST BE PROTECTED TO COMPLY WITH OSHA STANDARDS.
- FOR INSTALLATION, OPERATION AND MAINTENANCE, REQUEST FORM: VC5001.
- MINIMUM RECOMMENDED SHAFT MATERIAL TO BE SAE 4140/4142 ALLOY ROUND, HEAT TREATED TO 248-321 BRINELL.
- LUBRICATE WITH SAE 30 OIL OR MOLYBDENUM DISULFIDE GREASE.
- CUSTOMER TO MOVE SHAFTS .25 (6.4) APART TO PROVIDE THE FOLLOWING CLEARANCE FOR DROP OUT:
ELEMENT = .75 (19.1)
DRUM & AX-LOCK ASSY = .13 (3.3)
- WHEN REQUESTING INFORMATION, ALWAYS IDENTIFY THE APPLICATION BY THIS DRAWING NUMBER, THE MATERIAL LIST SHOWN AND AIRFLEX SALES ORDER NUMBER.
- VENDOR'S PART NUMBERS SHOWN MAY BE SUBSTITUTED WITH AN EQUIVALENT ALTERNATE.
- BEFORE SHIPPING, THE BEARINGS OF THE AXIAL LOCKING ASSEMBLY ARE FULLY PACKED WITH GREASE BY AIRFLEX. THE GREASE USED IS AHS/OIL MULTI-PURPOSE MOLY-COMPOUND SYNTHETIC NO. 2 EP GREASE. FOR INSTALLATION AND REPACKING OF BEARINGS, REFER TO FORM VC5001.
- CENTERS OF GRAVITY BASED ON SPECIFIED BORES.
- WEIGHT = 11,273 LB (5,113 KG) APPROX.

- CUSTOMER NOTES:
- CLUTCH TORQUE = 4,293,333 LB.INS. AT 100 PSI (485,333 Nm AT 7.0 BAR).
 - MOTOR SHAFT MATERIAL IS AISI 1045 STEEL. YIELD STRENGTH..... 37,500 PSI. ULTIMATE STRENGTH..... 75,000 PSI.

CERTIFIED PRINT

EATON CORPORATION
AIRFLEX PLANT
CLEVELAND, OHIO

P.O. NO. 10045555

CUST. REF. 5050344 P.T.

FILE NO. 57592/3

DATE 11-17-99

SIGNED *Thomas Choe*

MILL SUPPLIER... #85-340D66045
EQUIPMENT..... #E1-30-2120-01

02-0029 0145

19461	---	RELEASE	11-17-99	---
REV. NO.	LTN	ZONE	CHANGE	BY & DATE
EATON Airflex				
Eaton Corporation 10000 Eastman Road Cleveland, Ohio 44116				
51VC1600 DUAL CLUTCH APPLICATION (VC-510) WITH LOCKING ASSEMBLY FOR USE ON 22"x32.5" BALL MILL WITH DUAL 5500 HP QUAD MOTORS				
MATERIAL - SEE DETAILS				
DATE FROM				
ISSUED TO	09-01-99	CHECKED BY	11/15/99	APPROVED
CORE ID/MT.	80	SALES ORDER NO.	57592/3	REVISION
99185	80	57592/3	LA-11002	
SCALE	1/8"	WEIGHT	104748A	

DO NOT SCALE THIS DRAWING

THIS DRAWING IS A CRITICAL CHARACTERISTIC

UNLESS OTHERWISE SPECIFIED:

1. DIMENSIONS ARE IN INCHES (MILLIMETERS)

2. UNLESS OTHERWISE SPECIFIED, DIMENSIONS ARE TO BE MAINTAINED TO THE CLOSEST TOLERANCE PERMITTED BY THE MANUFACTURING PROCESS.

3. UNLESS OTHERWISE SPECIFIED, DIMENSIONS ARE TO BE MAINTAINED TO THE CLOSEST TOLERANCE PERMITTED BY THE MANUFACTURING PROCESS.

4. UNLESS OTHERWISE SPECIFIED, DIMENSIONS ARE TO BE MAINTAINED TO THE CLOSEST TOLERANCE PERMITTED BY THE MANUFACTURING PROCESS.

Plant: See Cheestech Expansion Project Phase 1
Equipment Tag No: E1-30-2120-01
Equipment Name: 22" x 32.5" Ball Mill
Equipment Supplier: Pw-Canada Industries Canada Inc.